

INDUSTRIAL SOLUTIONS



FROM YOUR VISION
TO OUR EXPERTISE

WE TRANSFORM CONCEPTS INTO EXCELLENCE



+30 YEARS

For over 30 years, we have served as a supplier to the automotive industry, exerting significant efforts in research and development to create pioneering concepts and solutions tailored to our customers manufacturing facilities. We play a crucial role in shaping the future of assembly lines and Intralogistics.

At Pinto Brasil, we are at the forefront of revolutionizing modern manufacturing. Our commitment to innovation, efficiency, and precision has led us to develop cutting-edge solutions in the realms of intralogistics and assembly lines.

With our diverse portfolio of products, we empower manufacturers across industries to optimize their production processes and enhance overall operational excellence.



ASSEMBLY LINE SOLUTIONS

Our assembly line solutions are engineered to meet the unique challenges posed by complex product assembly.

Customized Assembly Lines: We design and build assembly lines tailored to your product specifications, ensuring optimal workflow, precise positioning, and efficient production.



OVERHEAD ASSEMBLY LINE

ASSEMBLY LINE SOLUTIONS



Optimized space utilization, overhead assembly lines are designed to make the most efficient use of available floor space. By moving assembly processes and materials overhead, they free up valuable floor real estate, allowing manufacturers to maximize their production capacity without the need for extensive facility expansions.

Enhanced Workflow: These assembly lines are meticulously planned to facilitate a smooth and organized workflow. Components move seamlessly from station to station, reducing bottlenecks and ensuring that each assembly step is completed with precision and timeliness. To improve safety, these lines contribute to a safer work environment. By keeping materials and components overhead, they minimize clutter on the factory floor, reducing the risk of accidents and injuries. Workers can focus on their tasks without worrying about navigating around obstacles. With ergonomic design, workers can access and manipulate components at comfortable heights, reducing strain and fatigue.

SMART LINE

ASSEMBLY LINE SOLUTIONS



A LINE
WITHOUT
A LINE

Engineered to empower a fluid assembly line through cutting-edge AGV technology, we specialize in comprehensive concepts that holistically enhance the efficiency of material flows across diverse zones.

Our focus rests on seamlessly integrated solutions.

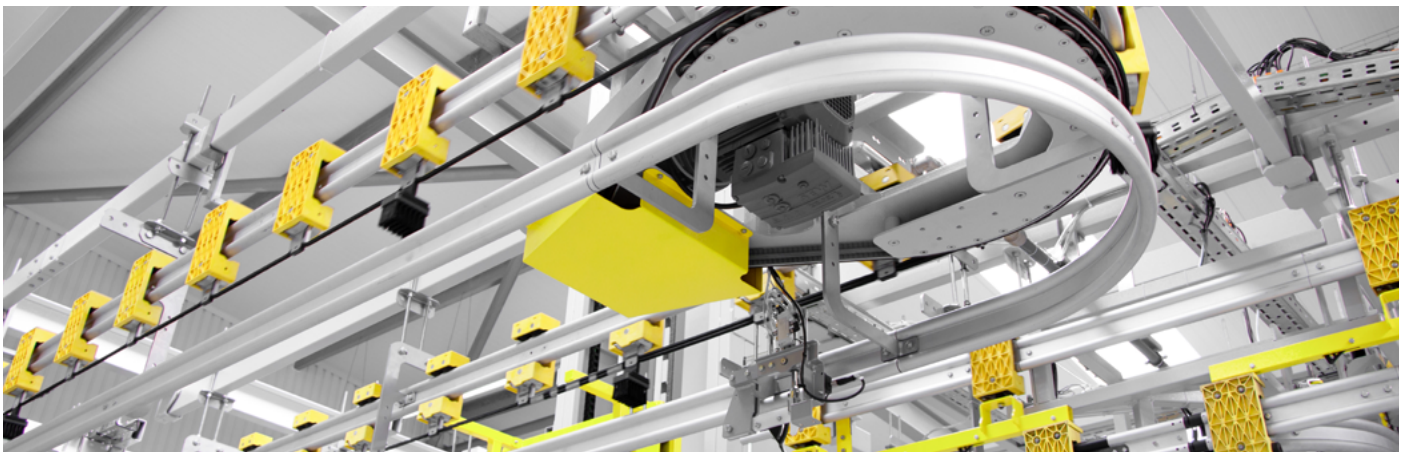
In contrast to traditional assembly line systems, our solution offers unparalleled spatial adaptability. Targeted configurations streamline operations. By anticipating needs and adjusting layouts accordingly, we facilitate effortless control and maintenance.



INTRALOGISTICS SOLUTIONS

Our intralogistics solutions are the backbone of efficient material handling and storage within your facility. Whether you require streamlined warehouse operations, optimized material flow, or intelligent automation, we have the perfect solutions tailored to your needs.

Conveyor Systems: Our conveyor systems are designed for seamless material transport, ensuring smooth transitions and precise routing to enhance production efficiency.



OVERHEAD WITH EMS TECHNOLOGY

INTRALOGISTICS SOLUTIONS



In the ever-evolving landscape of manufacturing, innovation is the key to staying competitive.

At Pinto Brasil, we are dedicated to advancing the manufacturing industry through ingenious solutions.

Our expertise lies in seamlessly integrating Electrified Monorail Systems (EMS), creating a synergy that redefines the way complex products are assembled.



Effortless Component Transportation

EMS introduces a new level of efficiency to Overhead Assembly Lines by offering a dedicated, automated transportation system for components. This eliminates manual handling, reduces the risk of errors, and ensures components are precisely positioned during assembly.



Optimized Workflow

The integration of EMS into Overhead Assembly Lines results in a meticulously synchronized and optimized workflow. Components move seamlessly along the assembly line, minimizing disruptions and maximizing efficiency.



Enhanced Safety

EMS incorporates state-of-the-art safety features, including collision detection and emergency stops, enhancing worker and product safety. Your workforce can focus on assembly tasks while EMS handles material transport.



Precision at its Best

Overhead assembly often demands precision positioning. EMS, equipped with advanced automation technology and computerized controls, guarantees that components are accurately placed, leading to impeccable assembly outcomes.



Labor Cost Reduction

By reducing the need for manual labor in material handling, EMS contributes to significant labor cost savings. Coupled with increased efficiency, this leads to substantial operational cost reductions.



Scalability and Adaptability

Overhead Assembly Lines with EMS are designed with flexibility in mind. Manufacturers can easily expand or reconfigure the system to meet changing production needs and evolving product designs.

SHOPSTOCKER
INTRALOGISTICS SOLUTIONS



AS/RS

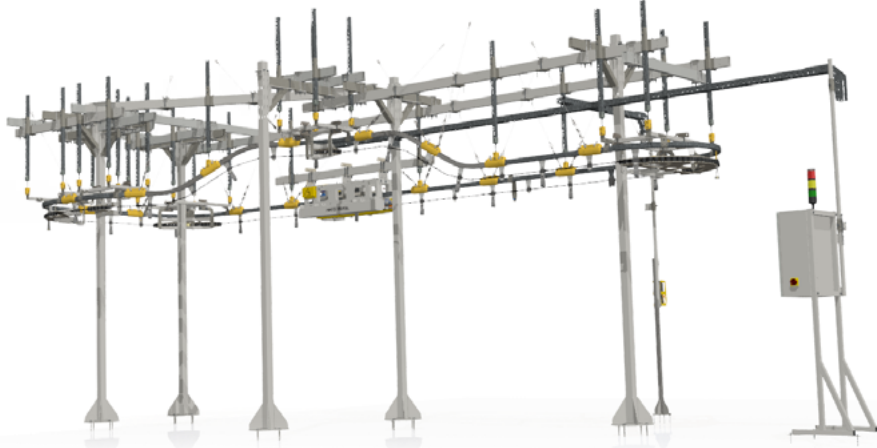
We designed a solution that combines automated storage (AS/RS) and transportation through overhead conveying systems. The ShopStocker is an overhead conveyor system with elevators between levels, which provides to your production chain a new way to transport and store a component of any nature.

This solution introduces a modular intralogistics solution that efficiently transports and stores parts, keeping in the mind the JIT (Just In Time) and JIS (Just In Sequence) concepts. An Overhead Conveyor systems, that ensures the parts are delivered in the sequence they are needed.

This cutting-edge technology optimizes storage space while enhancing operator ergonomics. Connected to different production chain processes, the **ShopStocker can be adapted to any industry, stores vertically or horizontally.**

SKYTRACKER

INTRALOGISTICS SOLUTIONS

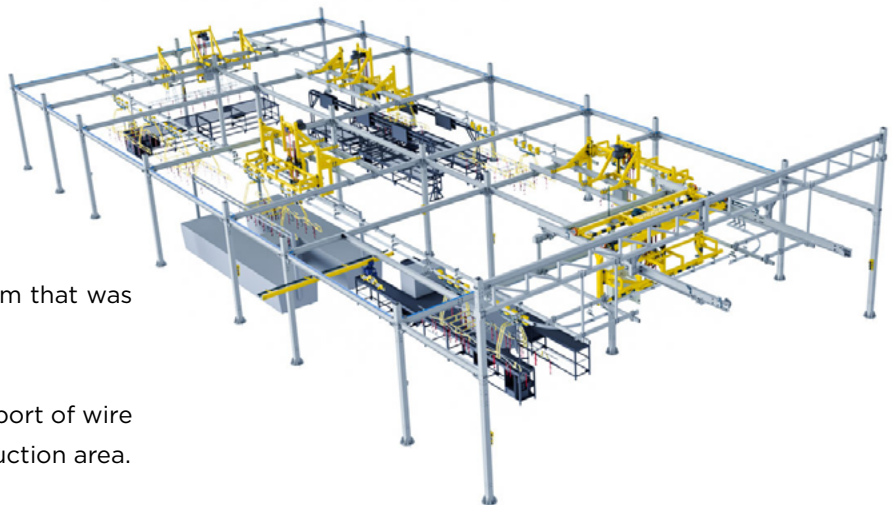


Suspended aerial conveyor, pulled by rope with clutter depending on the order, with hooks with a maximum capacity of 50kg. **The conveyor is designed to be modular.**

This equipment can be installed on the beams at the customer's factory, as well on floor base mounting. Both installation solutions will be configured as options. This solution allows different elevations without any lift and a fall protection guards in passage areas. In this equipment, the trolley is attached to the rope and cannot carry out accumulation.

HLS XL

INTRALOGISTICS SOLUTIONS

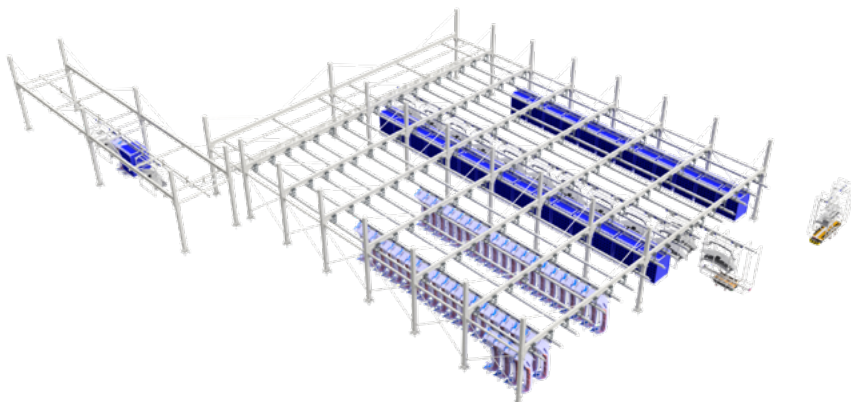


HLS XL is an Overhead Conveyor System that was designed to load large wire harnesses.

The loading structure enables the transport of wire harness up to 100kgs through the production area.

FLEXSTOCKER

INTRALOGISTICS SOLUTIONS



This system enables the management (storage and transportation) of work-in-progress parts.

It allows for manual transportation of pieces on specific, customized supports designed for each piece, or on universal supports capable of transporting various pieces on the same carrier.

The transportation process takes the parts to a manual storage area where they await the next production step or transportation to another unit. Here, they can be stored and transported again to the final consumption point. The entire system is based on manual architecture, but automated actuators can be incorporated when necessary and upon analysis.

Pinto Brasil presents this product in a modular concept with various add-ons such as workstation stocks, transfer carts, transport lines, ramps, and more.

This modularity allows for various configurations based on customer needs and space optimization.

CUBESTOCKER
INTRALOGISTICS SOLUTIONS

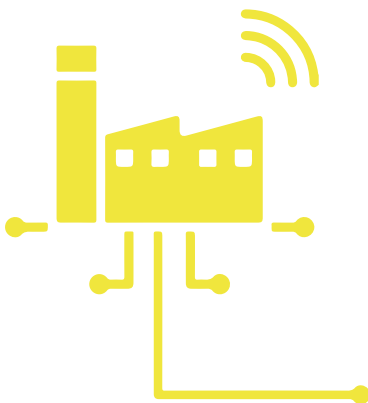


Automated Storage and Retrieval Systems. Our AS/RS solutions maximize storage space, reduce labor costs, and ensure fast and accurate retrieval of goods, enabling you to meet the demands of modern supply chains with ease.

A versatile modular metal framework engineered for container packing, management, and storage. This technology hinges on automation and is meticulously tailored to seamlessly integrate with your distinct intralogistics and production setups.

This Mini-Load Automated Storage and Retrieval System (mini-load AS/RS) offers swift and efficient storage and retrieval solutions, catering to wire spools and a wide array of containers, trays, cases, and bins.

Warehouse Management Systems (WMS): Our WMS software optimizes inventory control, order fulfillment, and real-time tracking, providing unparalleled visibility and control over your intralogistics operations.



SMART FACTORIES
START HERE



At Pinto Brasil, we understand the evolving demands of modern manufacturing.

Our intralogistics and assembly line solutions are more than products:

They are the keys to unlocking greater efficiency, productivity, and competitiveness.